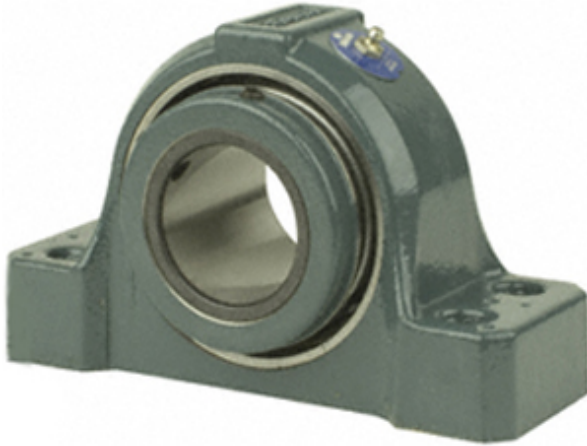




Jinan Longli Machinery Parts Co., Ltd



2.688 Inch | 68.275 Millimeter x 3.594 Inch |
 91.288 Millimeter x 3.25 Inch | 82.55 Millimeter
 DODGE P4B-S2-211L Pillow Block Bearings

Bearing No. P4B-S2-211L

P4B-S2-211L Bearing 2D drawings and 3D CAD models

Category	Pillow Block Bearings
Inventory	0.0
Manufacturer Name	ABB MOTORS AND MECHANICAL INC
Minimum Buy Quantity	N/A
Weight	10.624
EAN	0782475314874
Product Group	M06288
Number of Mounting Holes	4
Mounting Method	Concentric Collar
Housing Style	4 Bolt Pillow Block
Rolling Element	Spherical Roller Bearing
Housing Material	Cast Iron
Expansion / Non-expansion	Non-expansion
Mounting Bolts	5/8 Inch
Relubricatable	Yes
Insert Part Number	INS-S2-211L
Seals	Metallic Labyrinth
Housing Configuration	1 Piece Solid
Inch - Metric	Inch
Other Features	Double Row Has Flinger With Set Screw
Long Description	4 Bolt Pillow Block; 2-11/16" Bore; 3-1/4" Base to Center Height; Concentric Collar Mount;



Jinan Longli Machinery Parts Co., Ltd

	Spherical Roller Bearing; 7-15/16" Minimum Bolt Spacing; 8-5/16" Bolt Spacing Maximum; Re
Category	Pillow Block
UNSPSC	31171511
Harmonized Tariff Code	8483.20.40.80
Noun	Bearing
Keyword String	Pillow Block
Manufacturer URL	http://www.dodge-pt.com
Manufacturer Item Number	P4B-S2-211L
Weight / LBS	23.4
Actual Bolt Center to Center	0 Inch 0Millimeter
B	3.25 Inch 82.55 Millimeter
Nominal Bolt Center to Center	8.4 Inch 213 Millimeter
Bolt Spacing Minimum	7.938 Inch 201.625Millimeter
d	2.688 Inch 68.275 Millimeter
Bolt Spacing Maximum	8.313 Inch 211.15Millimeter
D	3.594 Inch 91.288 Millimeter